

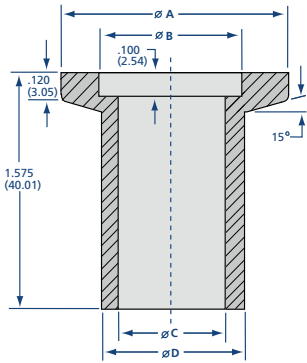
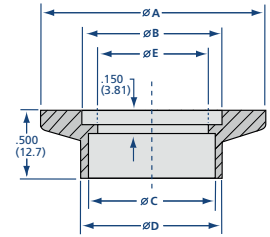
# Flanges & Fittings

## NW Socket Weld & Weld Neck Flanges



### NW Socket Weld Flanges

| MODEL NUMBER | TUBE OD      | A            | B            | C           | D            | E            |
|--------------|--------------|--------------|--------------|-------------|--------------|--------------|
| NW-10-SW     | 1/2 (12.7)   | 1.18 (30.0)  | 0.48 (12.2)  | 0.51 (13.0) | 0.61 (16.3)  | -            |
| NW-16-SW     | 3/4 (19.05)  | 1.18 (30.0)  | 0.68 (17.3)  | 0.76 (19.3) | 0.798 (20.3) | -            |
| NW-25-SW     | 1 (25.4)     | 1.575 (40.0) | 1.031 (26.2) | 1.01 (25.7) | 1.14 (29.0)  | 0.938 (23.8) |
| NW-40-SW     | 1 1/2 (38.1) | 2.16 (54.9)  | 1.62 (41.1)  | 1.51 (38.4) | 1.64 (41.7)  | 1.438 (36.5) |
| NW-50-SW     | 2 (50.8)     | 2.95 (74.9)  | 2.06 (52.3)  | 2.01 (51.1) | 2.14 (54.4)  | 1.938 (49.2) |



### NW Long Weld Neck Flanges

| MODEL NUMBER | A          | B            | C            | D            |
|--------------|------------|--------------|--------------|--------------|
| NW-10FL      | 1.18 (30)  | 0.48 (12.2)  | 0.38 (9.7)   | 1/2 (12.7)   |
| NW-16FL      | 1.18 (30)  | 0.68 (17.3)  | 0.625 (15.9) | 3/4 (19.1)   |
| NW-25FL      | 1.575 (40) | 1.031 (26.2) | 0.87 (22.1)  | 1 (25.4)     |
| NW-40FL      | 2.16 (55)  | 1.62 (41.1)  | 1.37 (34.8)  | 1 1/2 (38.1) |
| NW-50FL      | 2.95 (75)  | 2.06 (52.3)  | 1.87 (47.5)  | 2 (50.8)     |

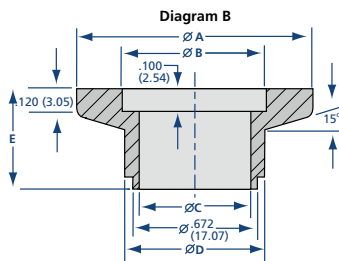
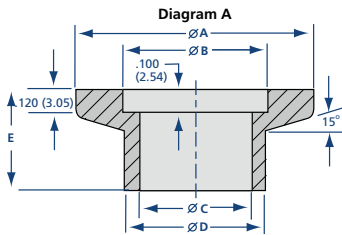
### NW 316L Stainless Steel Long Weld Neck Flanges

| MODEL NUMBER | A          | B            | C           | D            |
|--------------|------------|--------------|-------------|--------------|
| NW-25FL-316L | 1.575 (40) | 1.031 (26.2) | 0.87 (22.1) | 1 (25.4)     |
| NW-40FL-316L | 2.16 (55)  | 1.62 (41.1)  | 1.37 (34.8) | 1 1/2 (38.1) |
| NW-50FL-316L | 2.95 (75)  | 2.06 (52.3)  | 1.87 (47.5) | 2 (50.8)     |



### NW Short Weld Neck Flanges

| MODEL NUMBER | DIAGRAM | TUBE OD      | A            | B            | C            | D            | E           |
|--------------|---------|--------------|--------------|--------------|--------------|--------------|-------------|
| NW-10F       | A       | 1/2 (12.7)   | 1.18 (30.0)  | 0.48 (12.2)  | 0.38 (9.7)   | 1/2 (12.7)   | 0.5 (12.7)  |
| NW-16F       | B       | 3/4 (19.05)  | 1.18 (30.0)  | 0.68 (17.3)  | 0.625 (15.9) | 3/4 (19.1)   | 0.56 (14.2) |
| NW-16FB      | A       | 3/4 (19.05)  | 1.18 (30.0)  | 0.68 (17.3)  | 0.625 (15.9) | 3/4 (19.1)   | 0.5 (12.7)  |
| NW-25F       | A       | 1 (25.4)     | 1.575 (40.0) | 1.031 (26.2) | .087 (22.1)  | 1 (25.4)     | 0.5 (12.7)  |
| NW-40F       | A       | 1 1/2 (38.1) | 2.16 (54.9)  | 1.62 (41.1)  | 1.37 (34.8)  | 1 1/2 (38.1) | 0.75 (19.1) |
| NW-50F       | A       | 2 (50.8)     | 2.95 (74.9)  | 2.06 (52.3)  | 1.87 (47.5)  | 2 (50.8)     | 0.75 (19.1) |



### SPECIFICATIONS

**Tube OD sizes:** 3/8 to 2 inches (9.53 to 50.8)

#### Materials

Flange: 304 or 316L stainless steel  
O-rings: Viton, Buna & silicone

**Fasteners:** Wing nut, SureSeal, bulkhead & chain clamps

#### Vacuum range

Elastomer seal:  $\geq 1 \times 10^{-8}$  mbar - High vacuum  
Metal seal:  $\geq 1 \times 10^{-11}$  mbar - UHV

#### Temperature range

Viton: -20°C to 200°C  
Silicone: -50°C to 230°C  
Buna: -30°C to 110°C  
Metal seal: -270°C to 150°C

All dimensions are in inches (mm) & weights are in pounds (kg), unless otherwise noted.

See Section 2.1 for metal seals