

Flanges & Fittings

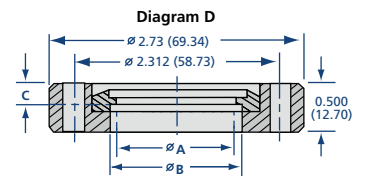
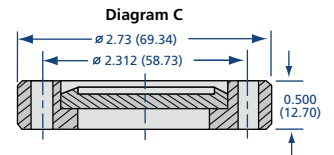
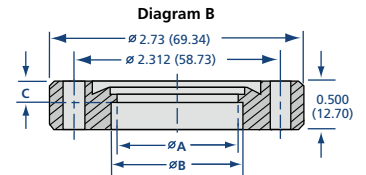
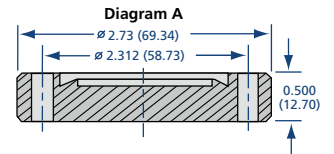
CF Flanges and Hardware



SECTION 2.5

CF Flanges - 2 3/4 Inch (69.9) Nominal OD

MODEL NUMBER	TYPE	DIAGRAM	ID A	B	C	BOLT HOLES	DIAMETER OR THREAD
275-000N	Blank	A	-	-	-	6	.265
275-025N	Bored	B	0.255 (6.48)	-	-	6	.265
275-050N	Bored	B	0.505 (12.83)	-	-	6	.265
275-075N	Bored	B	0.688 (17.48)	0.760 (19.2)	0.209 (5.31)	6	.265
275-100N	Bored	B	0.938 (23.83)	1.010 (25.65)	0.209 (5.31)	6	.265
275-125N	Bored	B	1.188 (30.18)	1.260 (32)	0.209 (5.31)	6	.265
275-150N	Bored	B	1.438 (36.53)	1.510 (38.35)	0.209 (5.31)	6	.265
275-162N	Bored	B	1.560 (39.62)	1.635 (41.53)	0.209 (5.31)	6	.265
275-175N	Bored	B	1.620 (41.15)	1.760 (44.7)	0.209 (5.31)	6	.265
275-000NT	Blank	A	-	-	-	6	1/4-28
275-025NT	Bored	B	0.255 (6.48)	-	-	6	1/4-28
275-050NT	Bored	B	0.505 (12.83)	-	-	6	1/4-28
275-075NT	Bored	B	0.688 (17.48)	0.760 (19.2)	0.209 (5.31)	6	1/4-28
275-100NT	Bored	B	0.938 (23.83)	1.010 (25.65)	0.209 (5.31)	6	1/4-28
275-125NT	Bored	B	1.188 (30.18)	1.260 (32)	0.209 (5.31)	6	1/4-28
275-150NT	Bored	B	1.438 (36.53)	1.510 (38.35)	0.209 (5.31)	6	1/4-28
275-162NT	Bored	B	1.560 (39.62)	1.635 (41.53)	0.209 (5.31)	6	1/4-28
275-175NT	Bored	B	1.620 (41.15)	1.760 (44.7)	0.209 (5.31)	6	1/4-28
275-000R	Blank	C	-	-	-	6	.265
275-025R	Bored	D	0.255 (6.48)	-	-	6	.265
275-050R	Bored	D	0.505 (12.83)	-	-	6	.265
275-075R	Bored	D	0.688 (30.18)	0.760 (19.2)	0.209 (5.31)	6	.265
275-100R	Bored	D	0.938 (23.83)	1.010 (25.65)	0.209 (5.31)	6	.265
275-125R	Bored	D	1.188 (30.18)	1.260 (32)	0.209 (5.31)	6	.265
275-150R	Bored	D	1.438 (36.53)	1.510 (38.35)	0.209 (5.31)	6	.265
275-000RT	Blank	C	-	-	-	6	1/4-28
275-025RT	Bored	D	0.255 (6.48)	-	-	6	1/4-28
275-050RT	Bored	D	0.505 (12.83)	-	-	6	1/4-28
275-075RT	Bored	D	0.688 (30.18)	0.760 (19.2)	0.209 (5.31)	6	1/4-28
275-100RT	Bored	D	0.938 (23.83)	1.010 (25.65)	0.209 (5.31)	6	1/4-28
275-125RT	Bored	D	1.188 (30.18)	1.260 (32)	0.209 (5.31)	6	1/4-28
275-150RT	Bored	D	1.438 (36.53)	1.510 (38.35)	0.209 (5.31)	6	1/4-28



Model Number Definitions

N = Nonrotatable, clearance bolt holes **NT** = Nonrotatable, tapped bolt holes **R** = Rotatable, clearance bolt holes
RT = Rotatable, tapped bolt holes **Add -M6** = Metric tapped bolt holes

CF Flange Hardware - 2 3/4 (69.9) Inch Nominal OD

MODEL NUMBER	DESCRIPTION
G-275	(10) OFHC copper gaskets
G-275V	(5) Viton gaskets
G-275-SP	(10) Silver plated copper gaskets
B-275	(25) SS 1/4-28 x 1 1/4" bolts, nuts & washers
B-275T	(25) SS 1/4-28 x 1" bolts & washers
B-275-12	(25) SS 12-pt. 1/4-28 x 1 1/4" bolts, nuts & washers
B-275-12-SP	(25) Silver plated SS 12-pt. 1/4-28 x 1 1/4" bolts, nuts & washers
B-275T-12	(25) SS 12-pt. 1/4-28 x 1" bolts & washers
B-275T-12-SP	(25) Silver plated SS 12-pt. 1/4-28 x 7/8" bolts & washers
B-275T-M	(25) SS (metric) M6 x 1.00 x 25mm bolts & washers
NP-150	(24) 1/4-28 plate nuts. See page 63
KNP-150	(12) Plate nuts, (24) 1/4-28 x 1 1/4" bolts & washers
KNP-150-12	(12) Plate nuts, (24) 12-pt. 1/4-28 x 1 1/4" bolts & washers



SPECIFICATIONS

General: Rotatable and nonrotatable with tapped or clearance holes

Materials

Flanges: 304 stainless steel
 (316L available upon request)
 Gaskets: Copper, Viton or silver plated
 Bolts: 18-8 stainless steel or silver plated

Torque: 12.4 Nm

Vacuum range

Metal seal: $\geq 1 \times 10^{-13}$ mbar - UHV
 Elastomer seal: $\geq 1 \times 10^{-8}$ mbar - High vacuum

Temperature Range

Metal seal: -200°C to 450°C
 Elastomer seal: -20°C to 150°C

All dimensions are in inches (mm) & weights are in pounds (kg), unless otherwise noted.