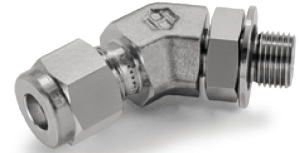
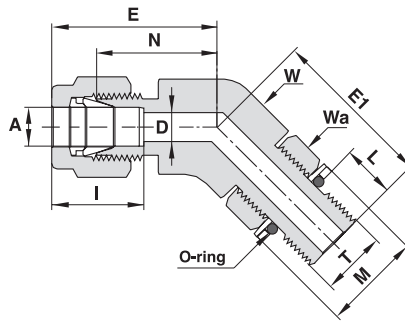


POSITIONABLES

ISO PARALLEL THREAD

769 LG 45° MALE ELBOW 45°



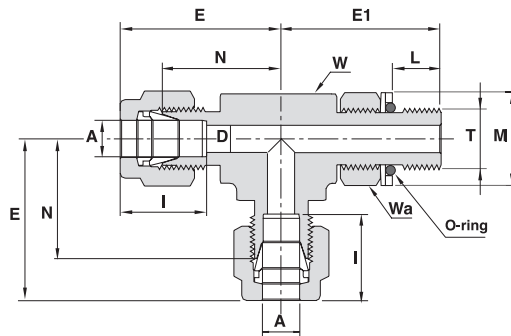
TUBE (METRIC) TO ISO PARALLEL THREAD (POSITIONABLE)*

Ordering Information	A Tube O.D.		T (ISO)	D		W Wrench Flat		Wa Hex. Flat	N		E		E1		L		M	I	O-ring**
	mm	inch	inch	mm	inch	inch	mm	inch	mm	mm	mm	mm	mm	mm	mm	mm	mm	mm	Dash No.
769LAG SS 6 X 1/8 POS.	6		G-1/8-28	4.0		9/16	14.3	9/16	17.5	24.9	24.0	8.1	17.3	15.3					***

TUBE (INCH) TO ISO PARALLEL THREAD (POSITIONABLE)*

Ordering Information	A Tube O.D.		T (ISO)	D		W Wrench Flat		Wa Hex. Flat	N		E		E1		L		M	I	O-ring**		
	inch	mm	inch	inch	mm	inch	mm	inch	inch	mm	inch	mm	inch	mm	inch	mm	inch	mm	Dash No.		
769LAG SS 1/4X1/8 POS.	1/4	6.35	G-1/8-28	.16	4.0	9/16	14.3	9/16	.69	17.5	.98	24.9	.94	24.0	.32	8.1	.68	17.3	.60	15.2	***

771 LG MALE RUN TEE



TUBE (METRIC) TO ISO PARALLEL THREAD (POSITIONABLE)*

Ordering Information	A Tube O.D.		T (ISO)	D		W Wrench Flat		Wa Hex. Flat	N		E		E1		L		M	I	O-ring**
	mm	inch	inch	mm	inch	inch	mm	inch	mm	mm	mm	mm	mm	mm	mm	mm	mm	mm	Dash No.
771LG SS 6 X 1/8 POS.	6		G-1/8-28	4.0		1/2	12.7	9/16	19.6	27.0	26.4	8.1	17.3	15.3					***
771LG SS 6 X 1/4 POS.	6		G-1/4-19	4.8		5/8	15.9	3/4	21.6	29.0	32.2	9.1	22.9	15.3					-111
771LG SS 8 X 1/4 POS.	8		G-1/4-19	5.9		5/8	15.9	3/4	22.4	29.9	32.2	9.1	22.9	16.2					-111
771LG SS 10 X 1/4 POS.	10		G-1/4-19	5.9		15/16	23.8	3/4	25.9	33.5	35.0	9.1	22.9	17.2					-111

TUBE (INCH) TO ISO PARALLEL THREAD (POSITIONABLE)*

Ordering Information	A Tube O.D.		T (ISO)	D		W Wrench Flat		Wa Hex. Flat	N		E		E1		L		M	I	O-ring**		
	inch	mm	inch	inch	mm	inch	mm	inch	inch	mm	inch	mm	inch	mm	inch	mm	inch	mm	Dash No.		
771LG SS 1/4 X 1/8 POS.	1/4	6.35	G-1/8-28	.16	4.0	1/2	12.7	9/16	.77	19.6	1.06	26.9	1.04	26.4	.32	8.1	.68	17.3	.60	15.2	***
771LG SS 1/4 X 1/4 POS.	1/4	6.35	G-1/4-19	.19	4.8	5/8	15.9	3/4	.85	21.6	1.14	28.9	1.27	32.2	.36	9.1	.90	22.9	.60	15.2	-111
771LG SS 3/8 X 1/4 POS.	3/8	9.52	G-1/4-19	.23	5.9	5/8	15.9	3/4	.91	23.1	1.20	30.5	1.27	32.2	.36	9.1	.90	22.9	.66	16.8	-111

* Per: DIN - ISO 228/1
BS - 2779
JIS - B0202
ISO - 228/1-BSP-P

** O-rings used are Fluorocarbon FKM 90 Durometer. Other O-ring materials are available on request.
*** Not standard O-ring size.
D - Dimension is minimum opening. Dimensions are for reference only, and are subject to change without notice.