

ToolFacts

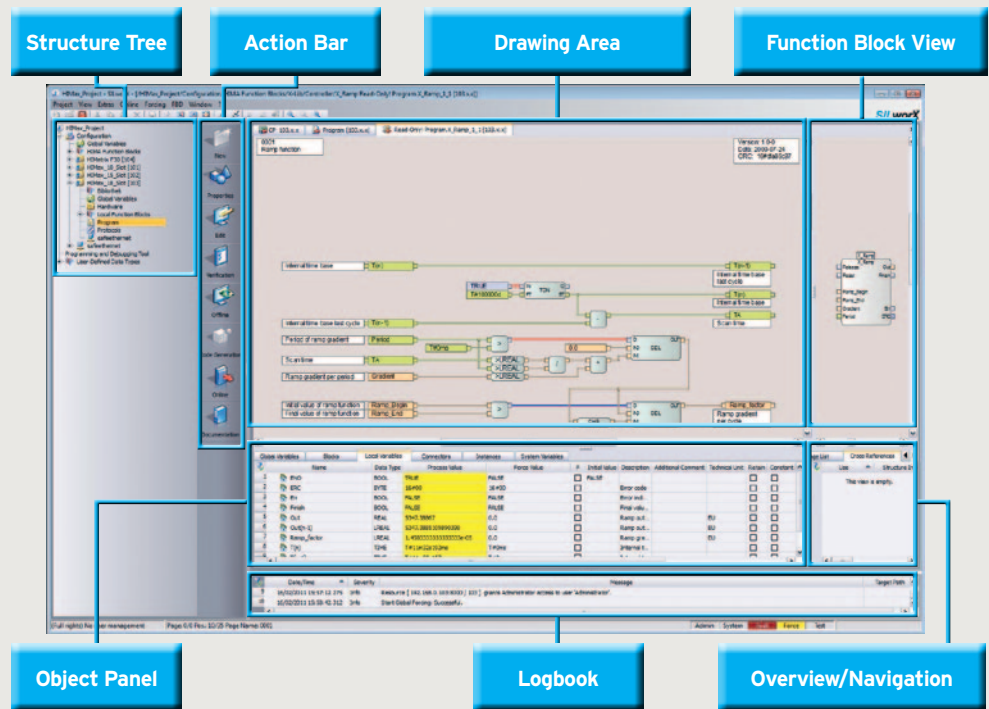
SILworX®

Highlights

- IEC 61131-3-compliant, supporting all functions and variable types for safety-related programming
- Flexible programming using function block diagrams, sequential function charts
- Programming language Structured Text (ST) for more efficient programming of calculations
- Supports reload functionality for hardware and logic changes
- Project saved automatically each time it is loaded
- Safe comparator for hardware and logic changes, including detail view and Go to ... functionality
- Program validation including offline simulation, online test
- Secure double code generation with code comparison
- Monitored forcing of signals
- Project-wide cross-references and navigation
- Password protection for projects and controller access
- Supports SOE programming
- Supports multitasking for up to 32 independent programs
- Hardware import/export via XML
- Library of function blocks (IEC 61511)
- C-Code function block option for using pretested C-Code within safety systems

Systems

SILworX is the HIMA engineering tool for HIMax® and HIMatrix® systems



Intuitive user interface with drag&drop programming.
Picture shows open function block editor in online view.

SILworX®

High-end safety engineering

SILworX is the fully integrated configuration, programming and diagnostic tool from HIMA. The intuitive user interface reduces application errors, and speeds up the engineering process. A range of user levels, the displaying of all status and diagnostic information, and comprehensive validation tools guarantee quick planning and commissioning.



SAFETY
NONSTOP

ToolFacts | SILworX®

Three license variants, each available as a hardlock variant and as a softlock variant.

Full license

SILworX as a configuration, programming, and diagnostics tool for all HIMatrix and HIMax systems. IEC 61131-3 conformant programming in function block diagrams (FBD), sequential function charts (SFC), Structured Text (ST), and optionally: C-Code function block alternative.



Advantages:

- One license for all functionalities.
- Restrictions of online functions are possible via the user management.

HIMatrix license

SILworX as configuration, programming, and diagnostics tool for all systems of the HIMatrix F-Series and HIMatrix M-Series. IEC 61131-3 conformant programming in function block diagrams (FBD), sequential function charts (SFC), Structured Text (ST), and optionally: C-Code function block alternative.

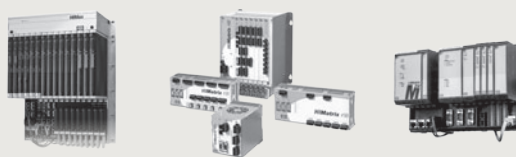


Advantages:

- Economical alternative for smaller installations.
- Restrictions of online functions are possible via the user management.

Maintenance license

SILworX as a diagnostics tool for all HIMatrix systems and HIMax systems. Only read-rights when accessing project data. PES access rights correspond to the user administration settings.



Advantages:

- Economical alternatives for large maintenance departments.
- Flexibility relative to reliable online functions.
- Project data is protected from operating error and manipulation.

Hardlock version

Portable USB stick that is included in the scope of delivery.

Advantages:

- Can be used on different PC workstations.
- Only the person who has access to the USB stick with the license, can open projects and connect to the controller online.

Softlock version

The license is bound to a PC workstation.

Advantages:

- It cannot get lost.
- Access to the PC can be restricted via Windows User Management.

System requirements

Minimum hardware requirements:

- Intel® Pentium® 4
- 256 MB free RAM
- 500 MB free storage space
- Resolution 1,024 x 768
- Ethernet interface

Software requirements:

- Microsoft® Windows® XP Professional (32-bit) Service Pack 3 or higher
- Windows® 7 Professional/Ultimate (64-bit) (tested with Ultimate)