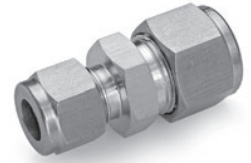
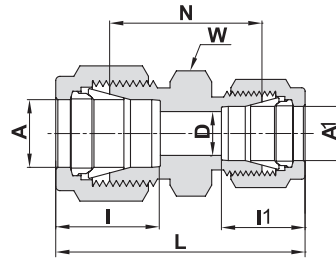


763 L REDUCING UNION



TUBE (METRIC) TO TUBE (METRIC)

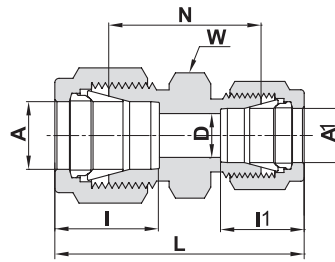
Ordering Information	A	A1	D	W Hex. Flat	N	L	I	I1
	Tube O.D.	Tube O.D.						
	mm	mm	mm	mm	mm	mm	mm	mm
763L_ 3 X 2	3	2	1.7	12	22.1	35.3	12.9	12.9
763L_ 6 X 2	6	2	1.7	14	24.6	38.6	15.3	12.9
763L_ 6 X 3	6	3	2.4	14	24.6	38.6	15.3	12.9
763L_ 6 X 4	6	4	2.4	14	25.4	39.4	15.3	13.7
763L_ 8 X 6	8	6	4.8	15	27.4	42.3	16.2	15.3
763L_ 10 X 6	10	6	4.8	18	29.5	44.5	17.2	15.3
763L_ 10 X 8	10	8	6.4	18	30.0	45.1	17.2	16.2
763L_ 12 X 6	12	6	4.8	22	29.5	47.0	22.8	15.3
763L_ 12 X 8	12	8	6.4	22	30.2	47.8	22.8	16.2
763L_ 12 X 10	12	10	7.9	22	31.0	48.7	22.8	17.2
763L_ 16 X 10	16	10	7.9	24	31.8	49.5	24.4	17.2
763L_ 16 X 12	16	12	9.5	24	31.8	52.0	24.4	22.8
763L_ 18 X 12	18	12	9.5	27	33.3	53.5	24.4	22.8
763L_ 25 X 18	25	18	15.1	35	38.6	61.0	31.3	24.4
763L_ 25 X 20	25	20	15.9	35	39.9	62.3	31.3	26.0
763L_ 38 X 20	*38	20	15.9	55	49.8	87.5	49.4	26.0
763L_ 38 X 25	*38	25	21.8	55	55.5	95.4	49.4	31.3

TUBE (METRIC) TO TUBE (INCH)

Ordering Information	A	A1	D	W Hex. Flat	N	L	I	I1
	Tube O.D.	Tube O.D.						
	mm	inch	mm	mm	mm	mm	mm	mm
763L_ 2 X 1/4	2	1/4	1.7	14	24.6	38.6	12.9	15.2
763L_ 3 X 1/8	3	1/8	2.4	12	22.1	35.2	12.9	12.7
763L_ 4 X 1/8	4	1/8	2.4	12	23.4	36.5	13.7	12.7
763L_ 4 X 1/4	4	1/4	2.4	14	25.4	39.4	13.7	15.2
763L_ 6 X 1/8	6	1/8	2.4	14	24.6	38.5	15.3	12.7
763L_ 6 X 1/4	6	1/4	4.8	14	26.2	41.0	15.3	15.2
763L_ 6 X 5/16	6	5/16	4.8	14	27.4	42.3	15.3	16.2
763L_ 8 X 1/8	8	1/8	2.4	15	25.7	39.8	16.2	12.7
763L_ 8 X 1/4	8	1/4	4.8	15	27.4	42.3	16.2	15.2
763L_ 8 X 3/8	8	3/8	6.4	16	29.5	44.3	16.2	16.8
763L_ 10 X 1/8	10	1/8	2.4	18	27.7	41.8	17.2	12.7
763L_ 10 X 1/4	10	1/4	4.8	18	29.5	44.5	17.2	15.2
763L_ 10 X 5/16	10	5/16	6.4	18	30.0	45.1	17.2	16.2
763L_ 10 X 3/8	10	3/8	7.1	18	31.0	45.9	17.2	16.8
763L_ 12 X 5/16	12	5/16	6.4	22	30.2	47.8	22.8	16.2
763L_ 12 X 3/8	12	3/8	7.1	22	31.0	48.4	22.8	16.8
763L_ 12 X 1/2	12	1/2	9.5	22	31.0	51.2	22.8	22.9
763L_ 15 X 1/2	15	1/2	10.3	24	31.8	52.0	24.4	22.9
763L_ 16 X 5/8	16	5/8	12.7	24	31.8	52.0	24.4	24.4
763L_ 18 X 3/4	18	3/4	15.1	27	33.3	53.5	24.4	24.4

* Including low friction paste, see page 91 "D" - Dimension is minimum opening. Dimensions are for reference only, and are subject to change without notice. Cont'd next page

763 L
REDUCING UNION (Cont'd)



TUBE (INCH) TO TUBE (INCH)

Ordering Information	A Tube O.D.		A1 Tube O.D.		D		W Hex. Flat	N		L		I		I1	
	inch	mm	inch	mm	inch	mm	inch	inch	mm	inch	mm	inch	mm	inch	mm
763L_ 1/8 X 1/16	1/8	3.17	1/16	1.58	.05	1.27	7/16	.81	20.57	1.22	30.98	.50	12.7	.34	8.6
763L_ 3/16 X 1/16	3/16	4.76	1/16	1.58	.05	1.27	7/16	.86	21.84	1.27	32.26	.54	13.7	.34	8.6
763L_ 3/16 X 1/8	3/16	4.76	1/8	3.17	.09	2.28	7/16	.92	23.36	1.44	36.57	.54	13.7	.50	12.7
763L_ 1/4 X 1/16	1/4	6.35	1/16	1.58	.05	1.27	1/2	.91	23.11	1.35	34.29	.60	15.2	.34	8.6
763L_ 1/4 X 1/8	1/4	6.35	1/8	3.17	.09	2.28	1/2	.97	24.63	1.52	38.60	.60	15.2	.50	12.7
763L_ 1/4 X 3/16	1/4	6.35	3/16	4.76	.12	3.04	1/2	1.00	25.40	1.55	37.37	.60	15.2	.54	13.7
763L_ 5/16 X 1/8	5/16	7.93	1/8	3.17	.09	2.28	9/16	1.01	25.65	1.56	39.62	.64	16.2	.50	12.7
763L_ 5/16 X 1/4	5/16	7.93	1/4	6.35	.19	4.82	9/16	1.08	27.43	1.66	42.16	.64	16.2	.60	15.2
763L_ 3/8 X 1/16	3/8	9.52	1/16	1.58	.05	1.27	5/8	1.00	25.40	1.44	36.58	.66	16.8	.34	8.6
763L_ 3/8 X 1/8	3/8	9.52	1/8	3.17	.09	2.28	5/8	1.06	26.92	1.61	40.89	.66	16.8	.50	12.7
763L_ 3/8 X 1/4	3/8	9.52	1/4	6.35	.19	4.82	5/8	1.12	28.44	1.70	43.18	.66	16.8	.60	15.2
763L_ 3/8 X 5/16	3/8	9.52	5/16	7.93	.25	6.35	5/8	1.16	29.46	1.74	44.19	.66	16.8	.64	16.2
763L_ 1/2 X 1/8	1/2	12.70	1/8	3.17	.09	2.28	13/16	1.12	28.44	1.78	45.21	.90	22.9	.50	12.7
763L_ 1/2 X 1/4	1/2	12.70	1/4	6.35	.19	4.82	13/16	1.16	29.46	1.85	46.99	.90	22.9	.60	15.2
763L_ 1/2 X 3/8	1/2	12.70	3/8	9.52	.28	7.11	13/16	1.22	30.98	1.91	48.51	.90	22.9	.66	16.8
763L_ 5/8 X 3/8	5/8	15.87	3/8	9.52	.28	7.11	15/16	1.25	31.75	1.94	49.27	.96	24.4	.66	16.8
763L_ 5/8 X 1/2	5/8	15.87	1/2	12.70	.41	10.41	15/16	1.25	31.75	2.05	52.07	.96	24.4	.90	22.9
763L_ 3/4 X 1/4	3/4	19.05	1/4	6.35	.19	4.82	1 1/16	1.25	31.75	1.94	49.28	.96	24.4	.60	15.2
763L_ 3/4 X 3/8	3/4	19.05	3/8	9.52	.28	7.11	1 1/16	1.31	33.27	2.00	50.80	.96	24.4	.66	16.8
763L_ 3/4 X 1/2	3/4	19.05	1/2	12.70	.41	10.41	1 1/16	1.31	33.27	2.11	53.59	.96	24.4	.90	22.9
763L_ 3/4 X 5/8	3/4	19.05	5/8	15.87	.50	12.70	1 1/16	1.31	33.27	2.11	53.59	.96	24.4	.96	24.4
763L_ 1 X 1/2	1	25.4	1/2	12.70	.41	10.41	1 3/8	1.50	38.10	2.38	60.45	1.23	31.2	.90	22.9
763L_ 1 X 3/4	1	25.4	3/4	19.05	.62	15.75	1 3/8	1.50	38.10	2.38	60.45	1.23	31.2	.96	24.4